

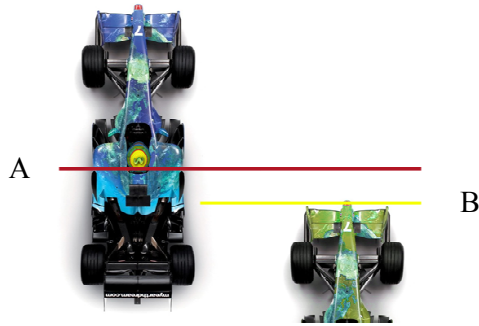


OFFICIAL PRESS RELEASE

To: All VRM Drivers

Date: 09/06/2012

REG 1.2 – Overtaking Reference Guide



Red Line indicates **line of sight** of Driver A
Yellow Line indicates **front part** of Driver B

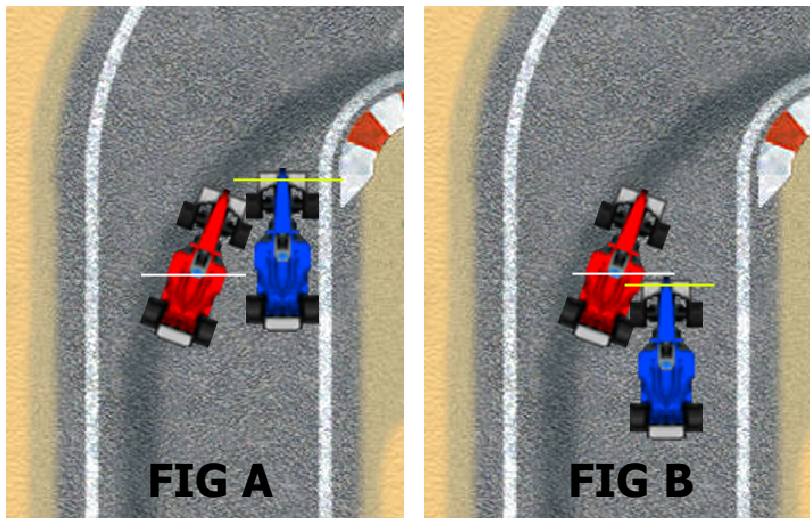


FIG A: At point of impact yellow line is ahead of white line. The red car should have used the back view mirror or side mirrors before taking the corner. The red car is at fault.

FIG B: At point of impact yellow line is behind white line. The red car is not at fault.

Jeffrey Camilleri

President

Chris Attard

Secretary



VIRTUAL RACING MALTA

